



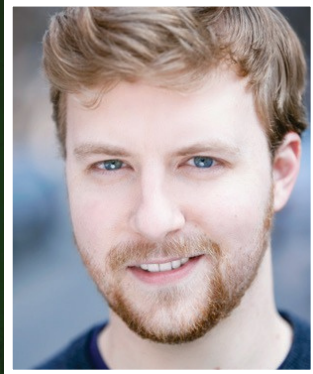
PRESS KIT

CONTACT: BRYAN MINER
DIRECTOR OF MARKETING AND
PHILANTHROPY
BRYAN@GREATERBOSTONSTAGE.ORG
781-587-7907

MEET THE CAST



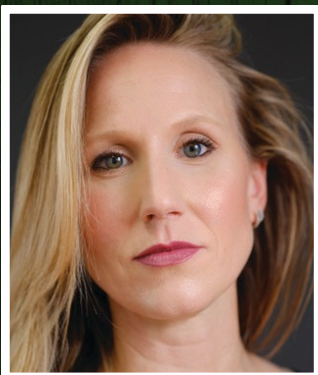
**KIRSTEN
SALPINI**



**DAN
PRIOR**



**TESSA PAIGE
SACRAMONE**



**JANIS
HUDSON**



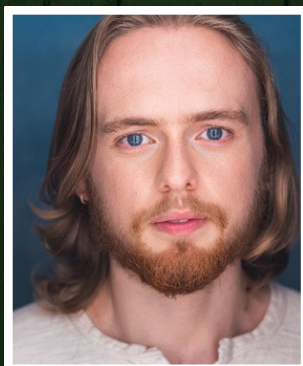
**JEFFREY
SONG**



**BILLIE
BUTLER**



**HOLLY B.
FAUST
(UNDERSTUDY)**



**CALEB
CHEW
(UNDERSTUDY)**



**ELLIOT
LAZAR
(UNDERSTUDY)**



**KATIE
PICKETT
(UNDERSTUDY)**

Music, Laughter, and Legacy: *The Irish and How They Got That Way* Comes to Stoneham



Featuring Billie Butler, Dan Prior*, Tessa Paige Sacramone*, Kirsten Salpini**, Jeffrey Song*, and Janis Hudson*. Understudies include Holly B. Faust, Elliot Lazar, Caleb Chew, and Katie Pickett.

Directed by A. Nora Long | **Music Direction by** Kirsten Salpini

Stoneham, MA — Just in time for St. Patrick's Day, Greater Boston Stage Company proudly presents *The Irish and How They Got That Way*, a rousing musical celebration of the Irish experience in America. Created by Pulitzer Prize-winning author Frank McCourt (*Angela's Ashes*), this spirited production runs from **February 28 – March 16, 2025**.

With humor, history, and heart, *The Irish and How They Got That Way* blends traditional Irish melodies, contemporary hits, and rousing folk tunes to tell the story of Irish resilience, perseverance, and culture. Audiences will be transported through generations of Irish American history with beloved songs like *Danny Boy*, *Finnegan's Wake*, and *No Irish Need Apply*.

"This production is a joyous and heartfelt journey through the struggles and triumphs of the Irish in America," says **Producing Artistic Director Weylin Symes**. *"Mccourt's storytelling, combined with iconic music, creates a moving and entertaining theatrical experience for all audiences."*

Adding to the immersive experience, this production offers exclusive **onstage seating**, allowing audiences to get up close and personal with the action!

Performances of *The Irish and How They Got That Way* will be held at Greater Boston Stage Company in Stoneham, MA. Tickets are available at greaterbostonstage.org or by calling the Box Office at **(781) 279-2200**.

The production team includes **A. Nora Long** (Director), **Kirsten Salpini**** (Music Director), **Jeremy Barnett** (Scenic Designer), **Amanda Fallon** (Lighting Designer), **Emily Woods Hogue** (Costume Designer), **John Stone** (Sound Designer), **Bryan Ward** and **Meghan Ward** (Sound Operators), **Hazel Peters** (Properties Designer), **Casey Blackbird** (Production Manager), **Marsha Smith*** (Production Stage Manager), **E.D. Fitzgerald*** (Assistant Stage Manager) and **Kira Troilo** (Equity, Diversity, and Inclusion Consultant).

*Member of Actors' Equity Association, the union of professional actors and stage managers in the United States.

**Music Director and member of Actor's Equity Association.

Single Tickets: \$64-\$95 Adults; \$59-\$90 Seniors; \$25 Students. For more information or to purchase tickets, call the Box Office at Greater Boston Stage Company at (781) 279-2200, or visit <https://www.greaterbostonstage.org/shows-tickets/mainstage/irish-and-how-they-got-that-way/>.

DIRECTOR BIO

A. NORA LONG (she/her) Directing credits include: *The Wolves* (Elliot Norton Winner for Outstanding Direction & Outstanding Production, Midsize), Virginia Woolf's *Orlando*, *Murder for Two*, *Mr. Burns: a post-electric play*, *Dear Elizabeth* (The Lyric Stage Company of Boston); *Coriolanus* (Actors' Shakespeare Project); *The Roommate*, *The Clean House* (Threshold Stage Company); *Noises Off!*, *Ruthless: the Musical!* (Hackmatack Playhouse), *Three* (Boston Public Works), *The Real Thing*, *Someone Who'll Watch Over Me* (Bad Habit Productions); and *EEP! Show*, *Midnight at the Last Cabaret*, *The Paper Bag Princess*, *Shh!*, *Candyland* (New Exhibition Room). She received her MFA in Dramaturgy from the American Repertory Theatre/ Moscow Art Theatre School Institute for Advanced Theatre Training at Harvard University and her BA from Sarah Lawrence College in theatre and Italian. You can read more about Nora's work at her online portfolio: <https://www.anoralong.com/>.

CAST BIOS

BILLIE BUTLER (they/them) has been a music and theatre maker for more than three decades. The last time they were on the GBSC stage was as Pedro/Guitar Player in *Man of La Mancha* in 2003! More recently they worked with Tony Award winning Greg Kotis (*Urinetown*) on his new musical, *End of All Flesh*. Boston: Cratchit/Marley in the world premiere of Dolly Parton's *Smoky Mountain Christmas Carol* at the Colonial Theatre and Billy in *ONCE the Musical* at Speakeasy Stage. Off-Broadway: *Crazy Head Space*, *Stepchild* and Hedwig in *Hedwig and the Angry Inch* (Broadway Cares/Equity Fights AIDS). They were the 2018/19 Artist-in-Residence for the Portsmouth Symphony Orchestra. They wrote the book, music, and lyrics for *Gay Bride of Frankenstein*, *Missing: Wynter*, *The Brechttones*, *Titus Andronicus Musicus*, and *Children of the Grim*. They have released six solo records and have appeared on dozens of studio recordings. Billie is the recipient of the Excellence in American Theatre Award by the

New England Theatre Council. Currently, they sing and play the cello like a bass in the band they founded, Bitter Pill. bitterpillband.com

DAN PRIOR* (he/him/they/them) is delighted to be performing at Greater Boston Stage for his first time! Lyric Stage: *Assassins* (Balladeer/Oswald), *Preludes* (Rach), *Little Shop of Horrors* (Seymour). Wellesley Rep: *The Liar* (Dorante), *Three Sisters* (Rhode). New Repertory: *1776* (Martha Jefferson), *Fiddler on the Roof* (Fyedka). Cape Repertory: *Fun Home* (Roy/Bobby). Reagle Music Theatre: *Carousel* (Enoch Snow), *Wonderful Town* (Frank Lippencott). Theatre by the Sea: *The Music Man* (Charlie Cowell). Moonbox Productions: *Parade* (Brit Craig/Gov. Slaton), *Cabaret* (Ernst Ludwig), *Barnum* (Lyman/Scudder). Bad Habit Productions: *A Man of No Importance* (Robbie Fay). A Boston based actor, writer and musician, Dan graduated Ithaca College with a BM in Vocal Performance and Education. Never ending love and gratitude to his wife and sons. Website: www.danprior.com

TESSA PAIGE SACROMONE* (she/her) is thrilled to be making her GBSC debut! Recent regional credits include *Once & Noise* (Wilbury Theater Group); *An American in Paris & Always...Patsy Kline* (fiddle, Cape Playhouse). Next up is fiddling in *Always...Patsy Kline* at Theater By The Sea. Tessa plays in several regional orchestras and has recently performed with artists such as Celtic Woman and Andrea Bocelli as well as recorded with rock bands Earthside and Bent Knee. She performs as a singer-songwriter and released her own album, "Belong Here," under the name Tessa Paige. Visit tessasacramone.com for more info.

KIRSTEN SALPINI** (she/her) is an actor, pianist, voiceover artist, music director, and singer, and she has performed all over the world with theater companies and cruise lines such as Holland America and Carnival. Favorite regional credits include *The Donkey Show* at American Repertory Theatre and *Murder for Two* at Lyric Stage Company of Boston (IRNE nomination for Best Lead Actress in a Musical). Her voiceover work includes clients like Google, Taco Bell, and Credo Beauty. Also a singer/songwriter, her original album *Girl at a Piano* can be found on Spotify, Apple Music, etc. BFA Shenandoah Conservatory. KirstenSalpini.com

JEFFREY SONG* (he/him) is delighted to make his GBSC debut with *The Irish...* Additional credits include work with American Repertory Theater, SpeakEasy Stage, Company One, Lyric Stage, Fresh Ink, Boston Playwrights' Theatre, Wheelock Family Theatre, Central Square Theater, The Revels, and the NPR storytelling podcast Circle Round. Credits as composer/music director include *Vietgone* (Studio Theatre, DC) and Mary Zimmerman's *The White Snake* (Baltimore Center Stage). A NE Foundation for the Arts grant recipient, Jeffrey has performed at music festivals around the globe and appears on over a dozen recordings – his original music featured at museums and on radio and television. As touring bassist for Ute Lemper, he performed at the Montreux Jazz Festival, Istanbul Jazz Festival, L'Opéra de Vichy, and The Palermo Festival Di Verdura. Jeffrey would like to thank the GBSC team for this opportunity. www.jeffreysong.com

JANIS HUDSON* (she/her) is a Boston-based actor, director, and choreographer and is thrilled to be making her GBSC debut with this very special show. Most recently, you may have seen her as Malvolio in *Twelfth Night* (THT Rep), Elvira in *Blithe Spirit* (Sullivan Rep), Matilda Hyde in *All Shook Up* (Reagle Music Theater), Madam in *The Hunchback of Notre Dame* (Firebird Pops Orchestra), or Laurel in *Torch Song* (Moonbox Productions). Other highlights include Shelby Stevens in *Steel Pier* (Sullivan Rep), Elsa Schraeder in *The Sound of Music* (Reagle Music Theater), and Diana Goodman in *Next to Normal* (Civic Theater, PA). Her creative endeavors are dedicated to Dr. Sandra Hardy, always.

ABOUT GREATER BOSTON STAGE COMPANY

We bring vibrant professional theatre and dramatic education beyond the boundaries of Boston, featuring world and regional premieres alongside fresh interpretations of familiar work. Within this setting, we uniquely foster the artists of tomorrow by providing ongoing performance and employment opportunities to our company of current and former students. Now in its 25th Season of live theatre in Stoneham, MA, Greater Boston Stage Company produces six Mainstage shows, presents a series of Special Events, and runs year-round classes, lessons, and fully staged productions through The Young Company for students in grades 1–12.

Box Office: (781) 279-2200; boxoffice@greaterbostonstage.org

Box Office Hours: Tuesdays – Fridays, noon to 4pm

Location: 395 Main Street, Stoneham, MA 02180

Website: greaterbostonstage.org

Facebook: Greater Boston Stage Company

Instagram: [gbstageco](https://www.instagram.com/gbstageco)

Show Sponsor: The Savings Bank

Flagship Sponsors: Mass Cultural Council, Salem Five Charitable Foundation, and StonehamBank.