

GUYS AND DOLLS



greaterbostonstage.org
781-279-2200

SHOW SPONSOR



FLAGSHIP SEASON SPONSORS





A NOTE FROM THE DIRECTOR

Ceit Zweil

Dear Friends,

My first memory, around the age of three, is hearing the overture of the Frank Loesser musical satire *How to Succeed in Business Without Really Trying* (winner of the 1962 Pulitzer Prize for Drama). In frequent rotation from the family vinyl collection, this Broadway score — full of unexpected twists and turns, and structured around rich, engaging melodies — was riveting. I knew every word of every song before I could read.

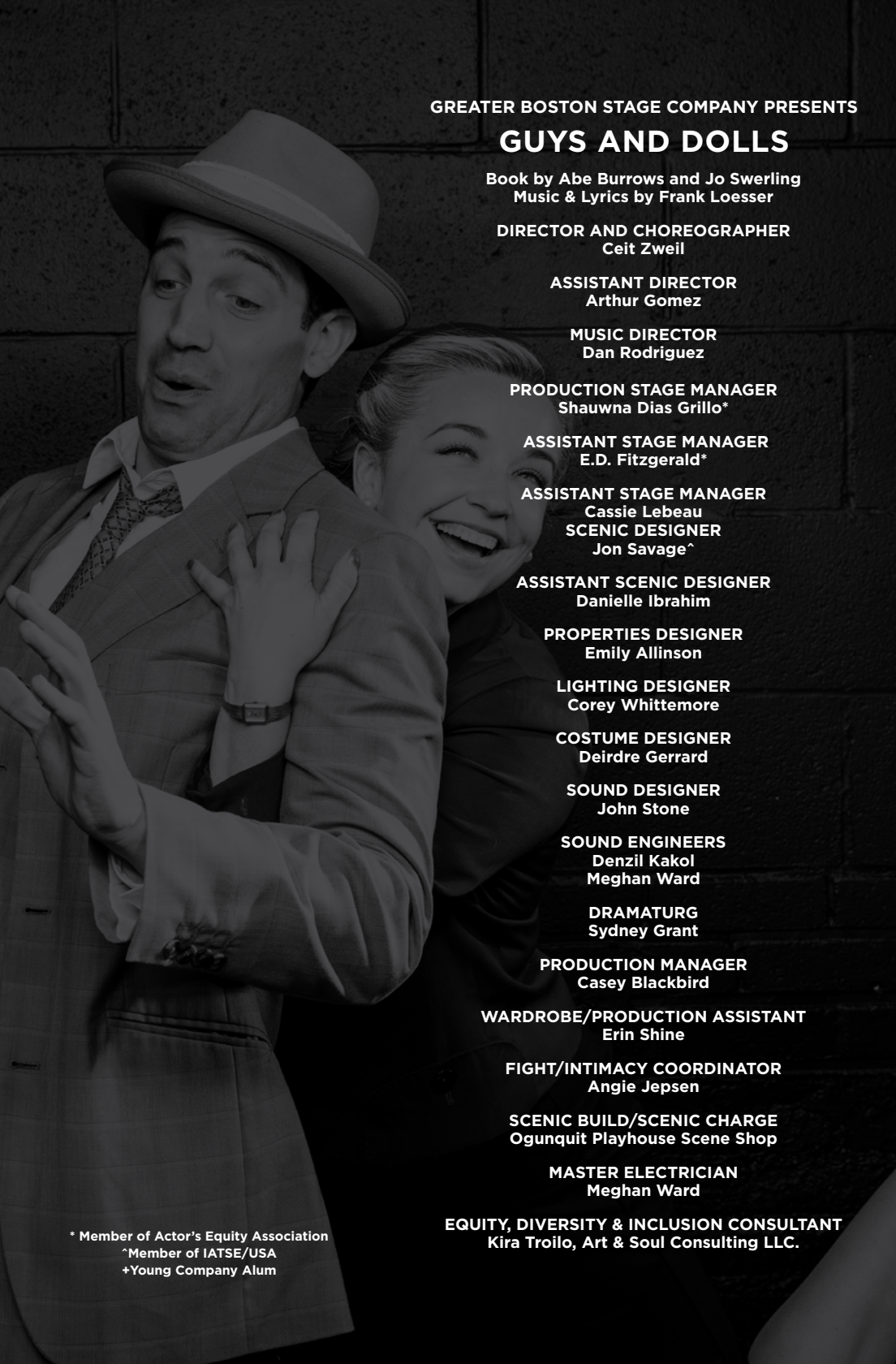
Weirdly, I came later to *Guys & Dolls*, winner of the 1951 Tony for Best Musical and the show with which Loesser is most commonly associated. Inspired by the stories of Damon Runyon, it is still considered to be a masterwork of American musical comedy, with a meticulously-constructed book and near-perfect score that conjures a unique world populated by vibrant, eccentric, funny and sympathetic characters.

The strength of its core structure is perhaps why *Guys & Dolls* is so endlessly adaptable as to be considered almost unshakable. There's even an immersive production currently running in London and, personally, I'm waiting for it to appear within some future world in an episode of *Doctor Who*. It's also why a chamber production like the one you're about to see will likely feel no less immersive than that big show across the pond; everything rests on the beauty, humor and heart of the book and score, delivered through the beauty, humor and heart of a first-rate cast like the one you are about to experience.

Many songs from Loesser's theatrical scores have settled into the American Songbook, being performed, recorded and interpreted by incredible artists like Dinah Washington, Mel Tormé, and Barbra Streisand. *Guys and Dolls* is no exception, with songs like "If I Were a Bell" and "Sit Down You're Rockin' the Boat" joining the Loesser catalogue of popular hits that also includes non-theatrical standards such as "Two Sleepy People" and "Heart and Soul" (both donning Loesser lyrics with Hoagy Carmichael melodies) and the perennial favorite "What Are You Doing New Year's Eve." (Hot Tip: That last tune is actually meant to be sung long before December 31!)

Regardless of what you might be doing come New Year's Eve, we're so happy you're here with us at this moment. Enjoy.

Ceit Zweil



GREATER BOSTON STAGE COMPANY PRESENTS

GUYS AND DOLLS

Book by Abe Burrows and Jo Swerling
Music & Lyrics by Frank Loesser

DIRECTOR AND CHOREOGRAPHER
Ceit Zweil

ASSISTANT DIRECTOR
Arthur Gomez

MUSIC DIRECTOR
Dan Rodriguez

PRODUCTION STAGE MANAGER
Shawna Dias Grillo*

ASSISTANT STAGE MANAGER
E.D. Fitzgerald*

ASSISTANT STAGE MANAGER
Cassie Lebeau
SCENIC DESIGNER
Jon Savage^

ASSISTANT SCENIC DESIGNER
Danielle Ibrahim

PROPERTIES DESIGNER
Emily Allinson

LIGHTING DESIGNER
Corey Whittemore

COSTUME DESIGNER
Deirdre Gerrard

SOUND DESIGNER
John Stone

SOUND ENGINEERS
Denzil Kakol
Meghan Ward

DRAMATURG
Sydney Grant

PRODUCTION MANAGER
Casey Blackbird

WARDROBE/PRODUCTION ASSISTANT
Erin Shine

FIGHT/INTIMACY COORDINATOR
Angie Jepsen

SCENIC BUILD/SCENIC CHARGE
Ogunquit Playhouse Scene Shop

MASTER ELECTRICIAN
Meghan Ward

EQUITY, DIVERSITY & INCLUSION CONSULTANT
Kira Troilo, Art & Soul Consulting LLC.

* Member of Actor's Equity Association

^Member of IATSE/USA

+Young Company Alum



Visit us for all of your
financial needs.
We've reserved a seat just for you.



Since 1869

The Savings Bank
Local. Innovative. Trusted.

Wakefield | Lynnfield | North Reading
Andover | Methuen

800-246-2009 | www.tsbdirect.bank

Member FDIC | Member DIF | Equal Housing Lender



CAST

Arthur Gomez*
Nathan Detroit/Assistant Director

Carolyn Saxon*
General Cartwright

Sara Coombs
Miss Adelaide

Jared Troilo*
Sky Masterson

Mark Linehan*
Benny Southstreet

Chip Phillips*
Arvide

Lisa Kate Joyce
Sarah Brown

Abigail Martin+
Agatha | Hot Box Girl 1

Stephen Markarian*
Nicely-Nicely Johnson

Darren Paul
Harry The Horse

Kaedon Gray
Calvin | Brannigan

Hannah Shihdanian
Angie | Mimi | Hot Box Girl 3

Allison Russell+
Martha | Big Jule | Hot Box Girl 2

Christian David*
Rusty Charlie

Laura Markarian+
Sarah Brown/Miss Adelaide Understudy & Dance Captain

Autumn Blazon-Brown+
Understudy

John Pagliarulo+
Understudy

MUSICAL NUMBERS

ACT ONE

| | |
|---------------------------------------|---|
| <i>Overture</i> | Orchestra |
| <i>Opening (Runyonland)</i> | Ensemble |
| <i>Fugue for Tinhorns</i> | Nicely-Nicely, Benny & Rusty Charlie |
| <i>Follow the Fold</i> | Sarah, Arvide and Mission Band |
| <i>The Oldest Established</i> | Nathan, Nicely-Nicely, Benny & Ensemble |
| <i>I'll Know</i> | Sarah and Sky |
| <i>A Bushel and a Peck</i> | Adelaide and Hot Box Girls |
| <i>Adelaide's Lament</i> | Adelaide |
| <i>Guys and Dolls</i> | Nicely-Nicely and Benny |
| <i>Havana</i> | Ensemble |
| <i>If I Were a Bell</i> | Sarah |
| <i>My Time of Day</i> | Sky |
| <i>I've Never Been in Love Before</i> | Sky and Sarah |

ACT TWO

| | |
|--|----------------------------|
| <i>Entr'acte</i> | Orchestra |
| <i>Take Back Your Mink</i> | Adelaide and Hot Box Girls |
| <i>Adelaide's Lament (Reprise)</i> | Adelaide |
| <i>More I Cannot Wish You</i> | Arvide |
| <i>The Crap Game Dance</i> | Ensemble |
| <i>Luck Be a Lady</i> | Sky and Crap Shooters |
| <i>Sue Me</i> | Adelaide and Nathan |
| <i>Sit Down, You're Rockin' the Boat</i> | Nicely-Nicely and Ensemble |
| <i>Follow the Fold (Reprise)</i> | Mission Meeting Group |
| <i>Marry the Man Today</i> | Adelaide and Sarah |
| <i>Guys and Dolls (Reprise)</i> | Entire Company |

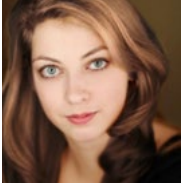
Piano/Conductor - Dan Rodriguez
Drums - Hector Saint-Hilaire
Bass - Matt Pitts
Reeds - Jeri Sykes
Trumpet - Isaac Bergner
Trombone - Lauren Gallaraga

CAST AND PRODUCTION TEAM

*Member of Actors' Equity Association,
the union of professional actors and stage managers in the United States.

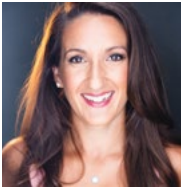


The use of any recording device, either audio or video, and the taking of photographs either with or without flash is strictly prohibited. Please turn off all electronic devices such as cellular phones, beepers, and watches. The use of cell phones in the theatre is prohibited.



SARA COOMBS she/her (Miss Adelaide) is delighted to be back at Greater Boston Stage! GBSC credits: *42nd Street, Thoroughly Modern Millie, Dames at*

Sea, She Loves Me, Being Earnest, Miracle on 34th Street, Swan Lake in Blue, Little Women, Clue, and Titanish. Sara has directed & choreographed Off-Broadway shows, national tours, and for many regional theatres. With over 15 years of teaching experience, Sara has taught tap dance and theatre at Broadway Dance Center, Peridance Capezio Center in NYC, and at multiple dance studios throughout New England. B.F.A in Musical Theatre from The Boston Conservatory. Thanks to all of you for supporting live theatre! For Grams.



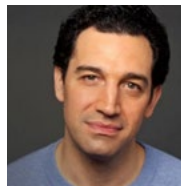
HANNAH SHIHDIANIAN she/her (Angie the Ox/Mimi/Hot Box Girl 3) is thrilled to return to GBSC! She is the Founder of HDC, a fitness and dance

community for adults and teens. HDC has a strong social mission and has raised money for the National Network of Abortion Funds, PFLAG, NAACP, The BLAC Project, relief aid in Ukraine, and more. She is also the Program Director for Wellesley Theatre Project (directed and choreographed over 50 productions). She has performed with the A.R.T., The Umbrella Stage Co., Reagle Music Theatre and more. Her favorite role is performing as Stage Manager for her three kids! www.hannahsdancecommunity.com IG: [hannahsdancecommunity](https://www.instagram.com/hannahsdancecommunity)



CAROLYN SAXON* she/her (General Cartwright) With GBSC: (*The Moors, Carolyn Saxon & Friends: Singin' in the New Year*), Broadway/Bway

National Tours/NY Theatre: *Bring In Da Noise, Bring In Da Funk, The Civil War*, Encores/City Center: *Purlie, Hair, Can-Can*, Duke Theater: *Timmy the Great*, Carnegie Hall/Gershwin Theater: *Linda Eder: The Christmas Concert*. Regional: Papermill Playhouse, Alliance Theatre, Actors Theatre of Louisville, Connecticut Repertory, North Shore Music Theatre, Studio Arena Theatre, Weston Playhouse, Forestburgh Playhouse, Struthers Library Theatre, Central Square Theater, Revels @ Sanders Theatre, SpeakEasy Stage, Greater Boston Stage, Wheelock Family Theatre, New Rep Theatre, Teatro Colon, Emerson Paramount. Film/TV: *Sweet & Lowdown, Small Time Crooks, Curse of the Jade Scorpion, Boston Pops Fireworks Spectacular, Boston Pops Holiday Lights, Jeopardy! Elliot Norton Award winner - black odyssey boston*

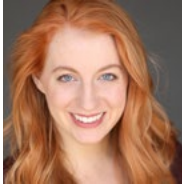


JARED TROILO* he/him (Sky Masterson) returns to GBSC after appearing as "Kodaly" in *She Loves Me* (IRNE Award) and in his original show *Fascinating Rhythm: The Music of George Gershwin and Leonard Bernstein*. Other credits include, The Huntington, Speak-easy Stage, Lyric Stage, Wheelock Family Theater, Moonbox Productions,



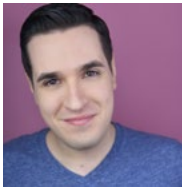
WWW.STONEHAMFORD.COM
781-438-0490

Palace Theatre, Winter Park Playhouse, Shadowland Stages, The Barnstormers, The Umbrella Stage, and Reagle Music Theater. TV/Film: About Fate (Amazon), Across The Pacific (PBS). IRNE Award Winner, 4-time Elliot Norton Award Nominee. Graduate of The Boston Conservatory. Proud member of AEA. Love to Kira, Levi and Baby T. JaredTroilo.com. 176pianokeys.com



LAURA MARKARIAN+ she/her (Sarah Brown/ Miss Adelaide understudy & Dance Captain) is a Stoneham native and so happy to be back at the theater

where she spent so much of her early theater life. She is a proud Young Company alum, and a graduate of the Boston Conservatory where she earned a BFA in musical theater. Her previous credits include: *The Producers*, *The Marvelous Wonderettes*, *How to Succeed...*, *42nd Street* and the *Gershwin Spectacular* with the Boston Pops. Laura is the proud co-founder/artistic director at Boxcar Stage Company, an educational theater program that serves the South Shore of MA (@boxcarstagecompany). Additionally, Laura is also the co-director of the theater program at Milton High School. She would like to thank her husband Stephen (her partner in all things), her family, the Boxcar kids and her two crazy pups Duncan & Maisie.



STEPHEN MARKARIAN* he/him (Nicely-Nicely Johnson) is delighted to return to GBSC, where he most recently appeared in *All Is Calm*. International/

National Tours: (The Orchestra Japan) and *Bunnica: The Musical* (TheatreworksUSA). Regional: *Violet* and *Carrie the Musical* (Speakeasy Stage Company), *Shrek the Musical* (Wheelock Family Theatre), *Grease*

and *Route 66* (Sierra Repertory Theatre). Television: Nickelodeon's *Ned's Declassified* and *Drake & Josh*. Proud graduate of The Boston Conservatory. Stephen is also the Co-Founder/Artistic Director at Boxcar Stage Company, a theatre education program on the South Shore. Additionally, he is also the Co-Theatre Director at Milton High School. Much love Laura, Duncan, Maisie & his family.



CHRISTIAN DAVID* he/him (Rusty Charlie) is excited to be making his debut with Greater Boston Stage Company! He was most recently seen playing

the role of Flotsam in Franklin Performing Arts Company's production of *The Little Mermaid*, with other favorite role credits including Donkey (*Shrek the Musical*), Sebastian (*The Little Mermaid*), and CC White (*Dreamgirls*). He is a student at Berklee College of Music completing his Bachelor of Arts in Professional Music with a Minor in Musical Theater. A recording artist, actor and producer, Christian is extremely passionate, and his work has been praised by many from across the Country.



CHIP PHILLIPS* he/him (Arvide) is delighted to be back at GBSC where he appeared in *Titanish* and *A Funny Thing Happened on the Way to the Forum*.

Off-Broadway: *Machiavelli*, *Perfect Crime*. Regional: *The Full Monty*, *Falsettos*, *Dirty Rotten Scoundrels*, *1776*. Local credits include *I Love You*, *You're Perfect*, *Now Change*, *Beauty and the Beast*, *The Gig*, *Sleuth*, *She Loves Me*, *The Front Page*, *Lend Me a Tenor*, *Das Barbecu*, *The Dresser*, and *Bed and Sofa*.



WORKING TOGETHER TO MOVE OUR COMMUNITIES FORWARD.

Salem Five is dedicated to helping our region thrive by understanding and supporting what matters most. We are thrilled to support this and celebrate the important mission of **Greater Boston Stage Company**.

SalemFive[®]

CHARITABLE FOUNDATION

salemfive.com | 800.850.5000

Member FDIC





JOHN PAGLIARULO+ he/him (Understudy) A proud young company alumni, is overjoyed to be back home onstage at GBSC. John is currently earning his

BFA at The Hartt School and recently finished classical training at Drama Studio London. Regional Theatre credits include *A Tiny Tim's Christmas Carol* (GBSC), *Twelfth Night*, *A Midsummer Night's Dream* (Cape Cod Shakespeare Festival). You can also see him this month at the Boston New Works Festival *Meet Me in The Bathroom* (Moonbox Productions). A huge thank you to Weylin and Ceit for this amazing opportunity and to his family, friends, and pup, Adelaide, for all their support and love.



ALLISON RUSSELL+ she/her (Martha/Big Jule/Hot Box Girl 2) is thrilled to return to GBSC after recently appearing in *Titanish*, which was one of her

favorite shows to date! She is a proud young company graduate and credits her love of theatre in large part to GBSC. Favorite credits include Roxie in *Chicago* (Pentucket Players), Maggie in *A Chorus Line* (Reagle Music Theatre), and Mae in LaChiusa's *The Wild Party* (Moonbox Productions). When she isn't onstage, you can find her performing as a kindergarten teacher on the North Shore. Allison would like to thank her Dad for his support. "Always for Mom. LYM."



DARREN PAUL he/him (Harry The Horse) Greater Stage Boston Company: *All Is Calm: The Christmas Truce of 1914* (Understudy), Actors' Shakespeare

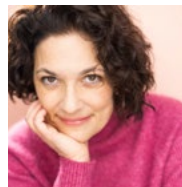
Project: *King Hedley II* (Understudy), Lyric Stage Boston: *Assassins* (Ensem-

ble), Sight & Sound Theatres: *JESUS* (James The Less), *NOAH* (Guard #1), Theatre Three: *Passing Strange* (Youth), *Memphis* (Gator), *Hot Mikado* (Poo-Bah), *Civil War Christmas* (Ensemble), Ochre House Theatre: *Smile, Smile Again* (Soldier), *Original Man* (Ray-Ray), Jubilee Theatre: *The Color Purple* (Ensemble), *Smokey Joe's Cafe* (Fred), *It Ain't Nothin' But The Blues* (Ron). Darren is a recipient of an Irma P. Hall Award for Best Featured Actor in a Play. He would like to thank God for his family, his friends, and Mis. Instagram: @mistadpnc



ARTHUR GOMEZ* he/him (Nathan Detroit/ Assistant Director) Acting Credits: Greater Boston Stage Company: *Miracle on 34th Street* (Mr. Macy), *Last Night*

at Bowl-Mor Lanes (Ed), *The Three Musketeers* (Monsieur Bonacieux). Lyric Stage: *Assassins* (Bystander), *Kiss of the Spiderwoman* (Prisoner). Boston Playwright's Theatre: *Lost Tempo* (John 'Sporty' Dale). Gloucester Stage: *Every Christmas Story Ever Told...* (Jim). Moonbox Productions: *Shipwrecked* (Ensemble), *Twelfth Night* (Feste), *Amadeus* (Orsini-Rosenberg) Directing Credits: Greater Boston Stage Company: *All Is Calm*. Reagle Music Theatre: *All Shook Up*. Moonbox Productions: *House of Ramon Iglesias*, *Passing Strange*. Undying love to Samantha and Quinn. I am forever grateful to have you.



CEIT ZWEIL she/her (Director/Choreographer) is a professional performer, choreographer and arts educator. Previous production team credits at GBSC

include *Altar Boyz* (Choreographer/ Co-Director) and last season's *Clue: On Stage!* (Movement Consultant) in which she also played Mrs. White. Other area choreography credits include *Some-*

Your neighbors and trusted financial partners.

Who We Are

We are more than a bank, we are your neighbors. For over 135 years it has been our mission to drive financial success, encourage economic stability and improve the lives of everyone who lives and works in our community.

Learn more about us at www.stonehambank.com



 **StonehamBank**

Expect more. Get more. Do more.



Member FDIC
Member DIF



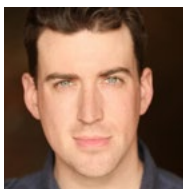
thing's Afoot and *Nutcracker* (GBSC); *Heart and Soul: The Songs of Frank Loesser* (also dir.) and *Happy Days Are Here Again* (NELO); and *The Paisley Sisters Christmas Special* (ICA, Worcester Foothills). She has had the pleasure of teaching, directing and choreographing for some amazing arts education programs, including The Young Company at GBSC and eleven seasons with Performing Artists at Lincoln School. As a performer, she has appeared onstage with The Huntington, GBSC, Lyric Stage Company, Commonwealth Shakespeare Company, New England Light Opera, New Repertory and Wheelock Family Theatre. Her career as a multimedia producer and project manager in educational media includes many flagship properties for PBS. She holds a BA in History (Smith College) and a MA in Theatre Education (Emerson College).

lock Family Theatre: *Beauty and the Beast* (Gaston), *Shrek The Musical* (Lord Farquaad), *Hairspray* (Corny Collins). Hanover Theatre: *A Christmas Carol*. In addition to performing, Mark gives tours along Boston's historic Freedom Trail, and has been featured on numerous episodes of *Mysteries at the Museum* on Travel Channel. Four-time IRNE nominee. BFA Emerson College. Proud member of AEA. For Amanda and Georgia, always. marklinehan.com. IG: @linehan.mark



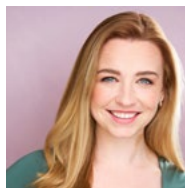
KAEDON GRAY he/him (Calvin/Brannigan) is pleased to make his debut with GBSC. Also a singer and pop song writer, his most recent acting credits include:

Don, Kaleo and Kendrick, Queer Voices 10-Minute Play Festival (Boston Theater Co); Snow Cone Dancer, Rocky Menorah Christmas Show (Gold Dust Orphans); and PrEP ads :) Love to D.

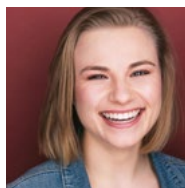


MARK LINEHAN* he/him (Benny Southstreet) Greater Boston Stage Company: *Titanish* (Cal Hockley), *Clue* (Professor Plum), *Onegin* (Evgeny Onegin), *It's A Wonderful Life* (George Bailey), and many others.

Lyric Stage: *The Drowsy Chaperone* (George) New Repertory Theatre: *Assassins* (John Wilkes Booth), *The Last Five Years* (Jamie). Reagle Music Theatre: *The Sound of Music* (Georg Von Trapp), *The Music Man* (Harold Hill), *Thoroughly Modern Millie* (Trevor Graydon). Wheel-



LISA KATE JOYCE she/her (Sarah Brown) is excited to be back at GBSC after appearing in *Clue* and *The Salonnières!* Other recent credits include *Madagascar the Musical*, *Curious George and the Golden Meatball* (North Shore Music Theatre), *Legally Blonde* (Moonbox Productions), *Assassins* (Lyric Stage Boston), and *Mr. Poppers Penguins* (Wheelock Family Theatre). She is a Dedham native and graduate of Salem State University. Fun Fact: *Guys and Dolls* premiered on Broadway on Lisa's birthday a decade or two before she made her earthly debut!



AUTUMN BLAZON-BROWN+ she/her (Understudy) is excited to be back at GBSC after appearing in *Incident at Our Lady of Perpetual Help*. Autumn is an actor, choreographer, and teaching artist. Previous acting credits include: *The Old Man and the Old Moon* (Matheson) at Rodger's Center for the Arts; *Carrie: The Musical* (Norma) at Arts After Hours; *The Dream Factory: Femme Fatale* and *The Dream Factory: The 60 Most Fascinating People* (Ingrid Superstar) with Silver Dream Projects at Dixon Place; *The Lesbian Invasion (Actor 4)* at Fresh Ink Theatre. She holds a degree in Theatre and Performance from Purchase College.

**ABIGAIL MARTIN+**

she/her (Agatha/Hot Box Girl 1) is thrilled to be back with GBSC! She is a recent graduate of Stoneham High School and will continue her

education in theater arts at Salem State University! She has participated in the METG acting competition where she won 2 acting awards for performances in *I Never Saw Another Butterfly*. Recent credit includes *The Little Mermaid* (Ariel). Favorite credits include *Heathers* (Veronica Sawyer) and *Mean Girls* (Regina George). She's performed with, SHS Drama Club (former vice president), New England School of Performing Arts, and Broken Leg Productions. Recent GBSC Young Company credit includes *Fun Home* (Helen Bechdel).

SHAUWNA DIAS GRILLO*

she/they (Production Stage Manager) As GBSC PSM: *All Is Calm* (original production + remount), *Beehive*, *Little Women*, *Sleepy Hollow*, *Popcorn Falls*, *Ain't Misbehavin*, *Miss Holmes Returns*, *Incident At Our Lady Of Perpetual Help*, and *The 39 Steps*. As Young Company stage manager: *The Sparrow*, *Frozen Jr.*, *Annie*, *Junie B. Jones Jr.*, *The Hunchback of Notre Dame*, *Sweeney Todd*, and *Alice*. ASM on many shows since 2016. She has also worked with Umbrella Stage Company, Wheelock Family Theatre, Reagle Music Theatre of Greater Boston, Revels, Inc., Bridge Rep, Brown Box Theatre, Speakeasy Stage Company, Emerson College, and Opera Del West.

CASSIE LEBEAU she/they (Assistant Stage Manager) graduated with her Bachelor of Fine Arts degree in technical theatre with a concentration in stage management from Salem State University. Previous assistant stage management credits include *Titanish*, *All Is Calm: The Christmas Truce of 1914*, *Clue On Stage*, and *Little Women: The Broadway Musical* (Greater Boston Stage

Company), *Fun Home*, *Finding Nemo Jr.* (Young Co at Greater Boston Stage Co). Other stage management credits include *A Wrinkle in Time* and *Bud, Not Buddy* (Wheelock Family Theatre), *Pericles* (Commonwealth Shakespeare Company), and *Gloria* (Gloucester Stage Company).

DENZIL KAKOL he/him (Sound Engineer) Lyric Stage: *The Drowsy Chaperone*, *Assassins*. Greater Boston Stage Company: *Beehive*, *Marie & Rosetta* and *Million Dollar Quartet*. He also volunteers with nonprofit organizations and houses of worship as a sound designer for chamber orchestras, choirs and community productions.

E.D. FITZGERALD* they/she (Assistant Stage Manager) MA based stage manager, designer, and creator. She graduated from Keene State College with a focus in management, scenic design, and acting. Past GBSC credits include *Dial M for Murder* (ASM,) *Titanish* (ASM,) *We Had a Girl Before You* (PSM,) *Clue* (ASM,) *Little Women* (ASM.) Other credits include *The Emperor's New Clothes* (PSM,) *2 Pianos 4 Hands* (ASM,) *A Year with Frog and Toad* (Ladybird, Mouse, Young Frog,) and *The 25th Annual Putnam County Spelling Bee* (Olive.) insta: @thefitzburger.

SYDNEY GRANT she/her (Dramaturg) Sydney was so happy to be part of the Guys and Dolls team and have the opportunity to support this incredible cast. In addition to her work as a Dramaturge, Sydney also works as a Director, Choreographer, Actor and Teaching Artist. She will be Directing and Choreographing *Six*, teen addition this summer with the Greater Boston Stage Young Co.

ERIN SHINE she/they (Wardrobe/ Production Assistant) is so excited to be working on her third production with Greater Boston Stage Company. Past productions: *Little Women* (Season 23)

and *Titanish* (Season 24). Working both on and backstage has always been her passion both at Salem State University (2022) and now professionally. “Thank you to everyone who supports me and all my friends here at GBSC!” See more of her work at erinshine.net.

DAN RODRIGUEZ he/him (Music Director) Dan is happy to return to GBSC after music directing the award-winning production of *Ain't Misbehavin'* with Front Porch Arts Collective in 2022. Dan's other area credits include work with the Huntington Theatre Company (*The Band's Visit, Sunday in the Park with George, A Little Night Music*), Lyric Stage Company (*Assassins, Preludes, The Last Five Years*), Reagle Music Theater (*Oklahoma!, Pippin, West Side Story*), Wheelock Family Theatre (*Mr. Popper's Penguins, In the Heights*), North Shore Music Theater (*Kinky Boots, Little Shop of Horrors*), American Repertory Theatre (*The Lily's Revenge, The Blue Flower*), Moonbox Productions (*Caroline or Change, Cabaret*) and many other theaters as well as work at the Boston Conservatory, Emerson, Brandeis, and other schools. His work has earned him two Elliot Norton awards as well as multiple nominations for Best Music Direction.

ACTORS' EQUITY ASSOCIATION (AEA)

was founded in 1913 as the first of the American actor unions. Equity's mission is to advance, promote and foster the art of live theatre as an essential component of our society. Through its agreement with Equity, this theatre has committed to the fair treatment of the actors and stage managers employed in this production. AEA is a member of the AFL-CIO and is affiliated with FIA, an international organization of performing arts unions. For more information, visit actorsequity.org.

* Member of Actor's Equity Association
^Member of IATSE/USA
+Young Company Alumni



BOARD OF TRUSTEES

Shanna Cahalane, CHAIR
Daria Niewenhous, MA, JD, VICE-CHAIR
Robert DiBella, TREASURER
Melodie Wing, SECRETARY

Joan Cassidy
Carolyn Saxon

James Oosterman
Aricia Symes-Elmer
Eric Bergstrom

Claudia Prodero Arnoff
Kiera McNelis-Shaw

STAFF

MANAGEMENT

Weylin Symes, PRODUCING ARTISTIC DIRECTOR
Heather Mell, OPERATIONS MANAGER

DEVELOPMENT AND FINANCE

Reliant Accounting LLC, BOOKKEEPER

EDUCATION AND ARTISTIC

Morgan Flynn, EDUCATION MANAGER
Autumn Blazon-Brown+, EDUCATION AND ADMINISTRATIVE ASSOCIATE
Casey Leone Blackbird, PRODUCTION MANAGER

MARKETING

Bryan Minert+, DIRECTOR OF MARKETING AND PUBLIC RELATIONS
Jonathan Santoro+, BOX OFFICE LEAD
Vanessa Schukis, HOUSE MANAGER

BOX OFFICE STAFF

Earl Battle, Michael DeFillippi, David Dooks,
Caty Jones+, Carola Roeder, Steve Roeder, Vanessa Schukis,
Ryan Natcharian, Leyah Eggleston, and Robert Foti

LAND ACKNOWLEDGEMENT

We acknowledge that our land is located on the traditional territories of the Wampanoag and the Massachusetts peoples.

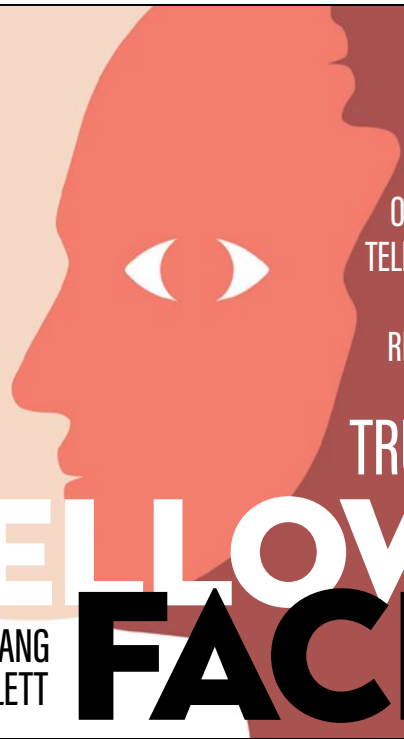
+The Young Company at Greater Boston Stage Company alum

LYRIC STAGE BOSTON CELEBRATING **50 YEARS**

MAY 31 - JUNE 23

LyricStage.com |   

CELEBRATING 50 YEARS CORPORATE SPONSOR
BrooklineBank



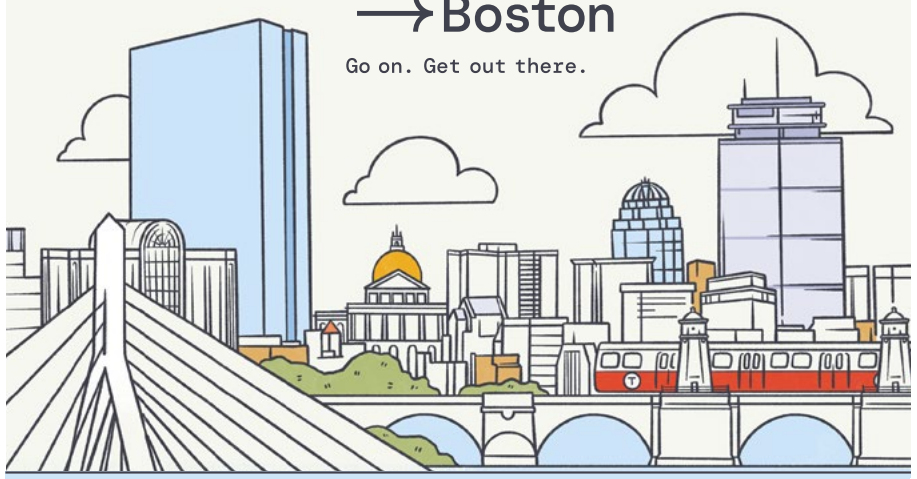
ONE MAN
TELLS A LIE,
DOZENS
REPEAT IT
AS THE
TRUTH.

YELLOW FACE

BY **DAVID HENRY HWANG**
DIRECTED BY **TED HEWLETT**

Field Guide → Boston

Go on. Get out there.



A NEW WAY TO EXPERIENCE THIS PLACE WE CALL HOME

wbur

wbur.org/fieldguide



THANK YOU TO OUR GENEROUS DONORS!

All of us at Greater Boston Stage Company are thrilled to be making theatre for our community. We couldn't do it without you.

The following list represents gifts made to Greater Boston Stage Company between May 1, 2023, through June 1, 2024.

CORPORATE, GOVERNMENT, AND FOUNDATION SUPPORT

FLAGSHIP SEASON SPONSORS (\$25,000+)

Salem Five Charitable Foundation
The Shubert Foundation
Stoneham Bank

Nahant Council on Aging
Super Stop & Shop, Stoneham
Triple T Foundation
VMware Foundation

* In-Kind donations
^ Employee Matching Gift programs

PLATINUM SPONSORS (\$15,000-24,999+)

Bridgeton Properties*
Melrose Cooperative Charitable
Foundation
Stoneham Motor Co.* - Platinum Show
Sponsor for *Titanish*

GOVERNMENT SUPPORT

Massachusetts Office of Travel & Tourism
Massachusetts Cultural Council
Burlington Cultural Council
Everett Cultural Council
Malden Cultural Council
Medford Cultural Council
Melrose Cultural Council
Methuen Cultural Council
North Reading Cultural Council
Peabody Cultural Council
Reading Cultural Council
Stoneham Cultural Council
Wakefield Cultural Council
Wilmington Cultural Council

SERIES SPONSORS (\$10,000-\$14,999)

The Savings Bank - Platinum Show
Sponsor for *Guys & Dolls*

GOLD SPONSORS (\$1,000-\$9,999)

Bank of America Foundation^
Bear Hill Healthcare
The Foundation Trust - Show Sponsor for
Where We Stand
Gaetano's Restaurant
Jackson Lumber and Millwork*
National Grid
Northern Bank and Trust
Westminster Barrington Foundation

Special thanks to State Senator Jason M. Lewis's and State Representative Michael Day's offices.

THE YOUNG COMPANY SEASON SPONSOR (\$15,000)

Adelaide Breed Bayrd Foundation

THE YOUNG COMPANY FUND-A-NEED SPONSOR (\$5,000)

Reading Cooperative Bank
Charitable Foundation

* In-Kind donations
^ Employee Matching Gift programs

CORPORATE FRIENDS (\$100-\$999)

Anonymous x3
Actors' Equity Foundation
American Online Giving
Entertainment Live Events, LLC
Fayerweather Street School
Mintz*

INDIVIDUAL DONORS

MARQUEE PRODUCER (\$25,000+)

(Anonymous)

Marquee Contributor (\$1,000-\$9,999)

Anonymous x2
Peter and Lynne Cameron
Joan H. Cassidy*
Nick DiCiaccio and
Marguerite Shepard-DiCiaccio
Wes and Sandy Elmer
The Flagg Family
Joan Ford Mongeau and Peter Mongeau
Janice and Katherine Houghton
Paul Marchesiani
Daria Niewenhous* and Michael Rickley
John and Annette Nikolich
Lisa and Jim Oosterman*
Sandra Reinecke
Marsha Rosselli and James Driscoll
Rob and Sandy Silk
Aricia Symes-Elmer* and the Elmer Family
Melodie Wing* and David Szabo

Enthusiast (\$250-\$999)

Claudia Arnoff*
Andrea and Eric Bergstrom*
John and Mary Lou Bracciotti
Patricia Brady
Karrie Brenneman
Todd Burne
Michael and Shanna Cahalane*
Mark F. Cardono and Tracy Sioussat
Judith and Richard Clark
John DePinto
Janet Distasio
Peter Haydu and Dona Sommers
Timothy E Finn
Bill and Carol Hayes
Kiewra family
Patricia Kilty
William and Linda Kimball
Dave Kurdzionak
In honor of Daria Niewenhous
Paul and Carolyn McCluskey
Beth and Brian McNelis
Sandra Nagler
Pagliarulo Family
The Pluskey Family
Dianne Rice
Carolyn Saxon*
Sulloway Family
The Symes Family
Tina Szoka

Susan J. and Lawrence A. Weiner
Donna M. Weiss
Cheryl and Robert Werlin
Zhang Giving Fund

Fan (\$100-\$249)

Anonymous x5
Jim Arnold and Krista Macari
Andrew Barrett
Raymond and Joan Bird
Norman Bitsoli
Sarah Bixler and Christopher Tonkin
Arthur and Lisa Brussard
Kathryn Butler
Peter and Laura Chan
Brendan and Lindsey Chisholm
Brendan and Jane Connell
In honor of Patricia Risser Kilty
Darrin and Lori Courtney
Alexander Creighton
William D'Amato
Lois and Albert DeBueriis
Jude Dehart
Anne Devaney
Robert DiBella*
Nancy and Stephen Ditullio
Bruce Doyle
Sally and Kathleen Duff
Larry Fava
Ellen T. Finneran
Teresa M. Gallinaro
Nancy B. Ghareeb
Ann Marie Giovino
Jacqueline Green
Lois A. Groves
Patrick Guthrie
Pam Hartman
Susan Hegel
Rose Howard
Fiona and Michael Kerr
Paul Lacey
Steven and Sally Lamb
The Lecoq Family
Juliet Leydon
Dorothy and Stephen
James and Theresa Markiewicz
Jacqueline Mattis
Daniel McDuffie
Edward and Lori McGrath
Alex McKillop
Nancy Meagher Mills
Donald Meninger
Evvajeane Mintz
Coogan Moyer
James Pidacks and Judith Murray
M.B. Nelting
Stephen and Margaret Ober

Francis OBrien
John and Margaret O'Keefe
Judith Packer
Lowell Partridge
Lee and Marion Phalen
Michael and Donna Pisari
Mary E. Roach
Cedrick Robinson
Meghan A Rosenberg
William and Jacki Santoro
Vanessa Schukis
Sid and Marion Schweiger
Faith Skipper
Marykelly C Smith
Erna Spencer
Jessica Stauffer
Strong Family
Linda Svetz
Judith and Stephen Terrazano
Karen Vigurs-Stack

*Member Greater Boston Stage Company Board
of Trustees

**WANT TO SUPPORT
ARTISTS IN NEED?
DONATE TO TCBF.**



Scan to
Donate

The Boston theatre community is resilient, but more importantly, it supports its members. Your gift today will directly help artists in times of hardship.

For more information (& to APPLY for funding relief), visit tcbf.org.



Theatre Community Benevolent Fund
Serving theatre artists since 1997 and needed now more than ever.

DONATIONS

Your philanthropic support is crucial to GBSC's continued success. Only 60% of the annual operating budget is covered by ticket sales. The theatre relies on the generosity of our sponsors and donors to provide the high quality professional theatre and arts education programs you have come to expect. From corporate sponsorships to individual gifts, there are so many different ways you can support GBSC. For more information on how you can make a gift, call Erick Buckley at 781-587-7918 or give online at greaterbostonstage.org.

CONTACT INFORMATION

395 Main Street
Stoneham, MA 02180
Box Office: 781-279-2200
Administrative Office: 781-279-7885
boxoffice@greaterbostonstage.org
greaterbostonstage.org

GROUPS

Special discounts are available for groups of 10 or more. Groups are also invited to use the gallery for exclusive pre or post-show receptions. To schedule your next event, contact Bryan Miner at 781-587-7907 or bryan@greaterbostonstage.org.

AGE APPROPRIATENESS

We rarely suggest appropriate ages for our productions. We assume all children are different and that guardians are the best judges for what is appropriate. We are happy to provide as much information as possible to help make these decisions. If you have questions, please ask the Box Office.

ACCESSIBILITY



Greater Boston Stage Company is committed to making theatre accessible to everyone. Accessible Seating: Patrons with a wheelchair and/or oxygen tank, or requiring other assistance, should inform the Box Office in advance so that accessible seating can be reserved.



Assisted listening devices are available at the Box Office at no charge. These devices have been made possible by the generous support of Barile Family Funeral Homes.



Babes in arms are not permitted and a seat must be reserved for every guest. A limited number of booster seats are available at the Box Office.



Cost should not be a barrier to enjoying the arts! Information is available at the box office about the theatre's EBT Card to Culture, Frugal Friday, and 25 for \$25 discounts. The theatre is also pleased to offer scholarships & attendance support for education programs through Fund-A-Need.

GENERAL POLICIES

The use of cameras and recording devices in the theatre is strictly prohibited.

Please turn off all pagers, cellular phones, watch alarms, and other noisemaking equipment when in the theatre.

In consideration for performers and other audience members, all latecomers will be seated at the discretion of the management in order to minimize distractions in our intimate theatre space.

Greater Boston Stage Company reserves the right to ask any patron causing a disturbance to leave the premises without refund.

Charitable Giving

FOR UNDER-SERVED NEW ENGLAND NONPROFITS



FOUNDATION TRUST

The Foundation Trust congratulates the **Greater Boston Stage Company** for an outstanding Season 24. We are proud to partner with the theatre to advance inclusivity in the arts through the *Giving Voice Contemporary Drama Series*.

The Foundation Trust is a private operating foundation with four priority tracks:

- Overcoming trauma and life adversity
- Turning the tide for high-risk children, families and communities
- Empowering lives, restoring dignity, and increasing community engagement for adults impacted by mental illness, cognitive decline or degenerative conditions
- Preserving New England's cultural and environmental heritage

To learn more or to get involved, visit us at www.foundationtrust.org



ANNOUNCING SEASON 25



DINNER FOR ONE
November 1 - 17, 2024



WINTER WONDERETTES Nov.
29 - Dec. 22, 2024



THE IRISH AND HOW THEY GOT THAT WAY
Feb. 28 - March 16, 2025



THE PLAY THAT GOES WRONG
March 28 - April 19, 2025



**FOUNDING F...ERS
(EFFERS)**
May 2 - 18, 2025



LITTLE SHOP OF HORRORS
June 6 - 29, 2025

SUBSCRIPTIONS ON SALE NOW! SINGLE TICKETS ON SALE JULY 1